



# INTRODUCING CEMAR GROUP OF COMPANIES

CEMAR  
INTERNATIONAL {CII}



CEMAR AUTO DMCC  
{CAD}



CEMAR AUTO  
MANUFACTURING  
{CAM}

# CEMAR INTERNATIONAL INDUSTRIAL LLC



READYMADE STEEL  
KITS FOR  
ARMORED CABINS

TRADING OF STEEL  
FOR ARMORING  
NEEDS

BRG – BULLET  
RESISTANT GLASS

RFS- RUNFLAT  
SYSTEM

WHEEL COMBOS

WHEEL RIMS

TURRETS

ARMORED  
VEHICLE  
SUSPENION

ARMORED  
ACCESSORIES LIKE  
HINGES, SEATS,  
BRAKE PADS, etc.,

TIPPER & TRAILERS  
STEEL KITS  
MANUFACTURING  
& SUPPLY.



# CEMAR AUTO DMCC



**MILITARY CHASSIS  
SUPPLIER**

**SEMI ROBOTIC  
FABRICATION OF  
ARMORED CABINS**

**COMPLETE MILITARY  
CHASSIS & FULL  
ARMORING KITS  
WITH DESIGN &  
MANUFACTURING  
SUPPORT**

**DESIGN &  
CONSULTANCY FOR  
ARMORING  
PROJECTS**

# CEMAR AUTO MANUFACTURING



MANUFACTURING  
OF MILITARY  
CHASSIS

MANUFACTURING  
OF CABINS FOR  
SPECIAL PURPOSE  
VEHICLE

FULL ASSEMBLY  
OF CHASSIS,  
CABIN,  
ACCESSORIES &  
SYSTEM  
INTEGRATION

FINAL TESTING &  
COMMISSIONING



# ACHIEVEMENTS OF CEMAR

CEMAR STARTED OPERATIONS IN 2008 WITH A TURNOVER OF 500,000 DHS & WERE A SMALL TRADING COMPANY TILL 2014 WITH TURNOVER OF 5M DHS. OVER LAST 8 YEARS IT SCALED TO NEW HEIGHTS OF 256M DHS IN 2023.

CEMAR PHILOSOPHY IS SIMPLE – SINGLE POINT SOURCE FOR ALL ARMORING PRODUCTS AND ULTIMATE SATISFACTION OF EMPLOYEES, SUPPLIERS AND CUSTOMERS.

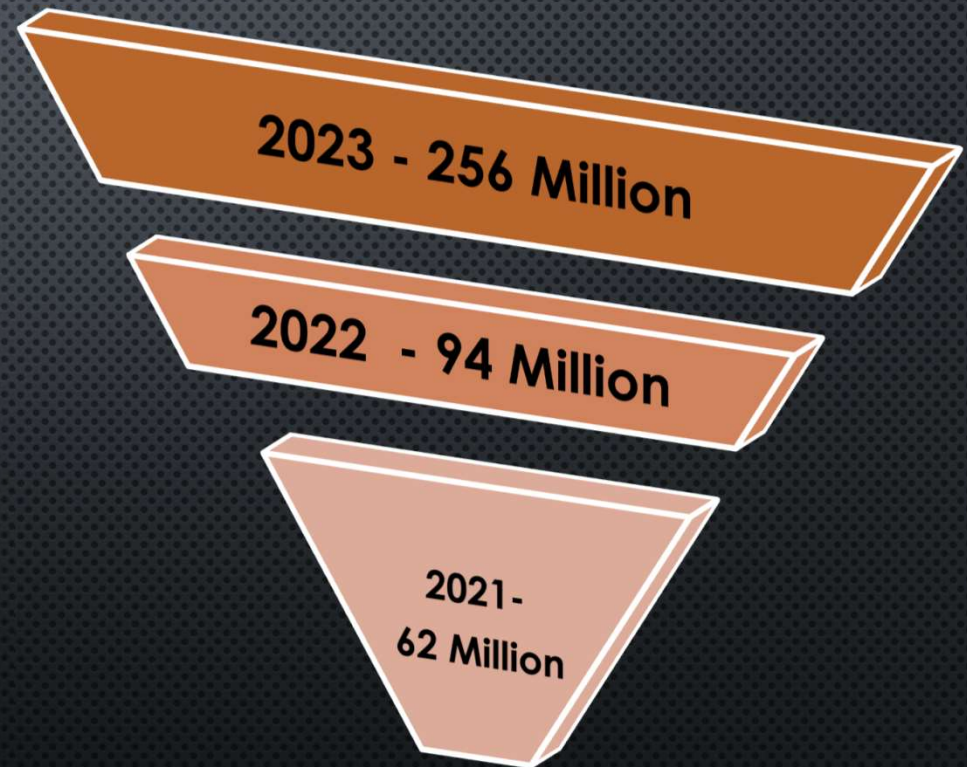
CEMAR HAS 30 PROFESSIONALS OF MORE THAN 10-25 YEARS OF EXPERTISE IN THE FIELD OF ARMORING INDUSTRY.

CEMAR IS AN ISO 9000 CERTIFIED COMPANY WITH ALL INDUSTRIAL QUALITY MANAGEMENT SYSTEMS

PRODUCTS AND SERVICES ARE OFFERED TO 105 ARMORING AND MILITARY ESTABLISHMENTS SPREAD OVER 22 COUNTRIES.

SALES AND SERVICE NETWORKS IN 6 DIFFERENT STRATEGICALLY DIVERSIFIED LOCATIONS.

## ANNUAL TURNOVER



# CEMAR CUSTOMERS & TECHNICAL PARTNERS



BHARAT FORGE



ERAF



ROSHEL



**Mahindra**  
Emirates Vehicle Armouring





## **CEMAR INTERNATIONAL INDUSTRIAL LLC {CII} FACILITY**



- **CII IS SPREAD ACROSS 135,000 SQ.FT OF AREA WITH STATE OF ART TECHNOLOGY & MACHINERY'S FOR BALLISTIC STEEL PROCESSING WITH 6 FIBER LASERS OF 12 KW – 2.5X12 MTRS AND 2 CNC PRESS MACHINES OF 1500 TONS X 12 MTRS, ARMORED MATERIAL TRADING, RUNFLAT MACHINING AND MILITARY WHEEL COMBO ASSEMBLY LINE.**
- **CII IS ONE OF THE BIGGEST STOCKIEST & SUPPLIER OF BALLISTIC/ARMORED/BLAST STEEL ALL OVER THE WORLD WITH AUTHORIZED DEALERSHIP FROM ACRONI (SLOVENIA – EAST EUROPE), WHICH IS THE BIGGEST STEEL MILL IN THAT REGION TO PRODUCE SPECIAL STEEL.**
- **CII ALSO PROMOTE CEMHARD & CEMPRO STEEL, WHICH IS OWN BRAND AND IMPORTED FROM VARIOUS EUROPEAN MILLS.**
- **CII IS WELL EQUIPPED WITH PROFESSIONAL & EXPERIENCED MANPOWER. MORE THAN 90 WORKFORCE SUPPORTS CEMAR TO ACHIEVE THE COMPANY GOALS YEAR AFTER YEAR.**



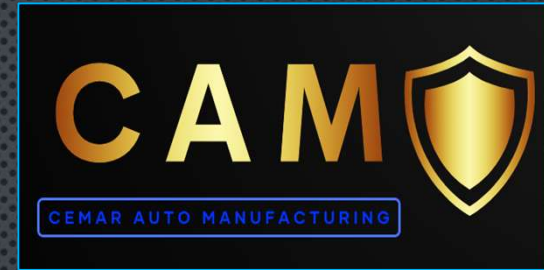
## **CEMAR AUTO DMCC {CAD} FACILITY**



- CAD HEAD OFFICE IS IN DUBAI DMCC AND IS WELL EQUIPPED WITH 10 INDUSTRY EXPERTS WITH 25 PLUS YEARS OF HAND ON EXPERIENCE IN MILITARY CHASSIS INTEGRATION, APC / MRAP DESIGNING AND COMPLETE ARMOURING SOLUTIONS. THEY ARE EQUIPPED WITH ALL LATEST SOFTWARES & MODERN TECHNOLOGY TO FACILITATE DESIGN AND DEVELOPMENT PROJECTS.
- CAD WILL MAKE SUPERIOR DESIGN OF ARMORED CABINS WITH LIGHT WEIGHT & ADD ON ARMOR CONCEPTS INCLUDING OPAQUE ARMOR & COMPOSITE TO MEET PROTECTION UP TO STANAG LEVEL IV PROTECTION.
- TIE UPS WITH INTERNATIONAL ACCREDITED LAB FOR PROTO-TYPING, TESTING & VALIDATION.
- SEMI AUTOMATIC FABRICATION TECHNOLOGY FOR HIGH QUALITY OF ARMoured CABINS FOR WELDING & STRUCTURAL STRENGTH IN PRODUCTION LOT.
- TRAINING FOR INSTALLATION, INTEGRATION & ON SITE SUPPORT TO FACILITATE ARMOURING PROJECTS.
- MODULAR MILITARY CHASSIS & FULL ARMORING KITS WITH DESIGN & MANUFACTURING SUPPORT TO COMPLY WITH GLOBAL REQUIREMENTS.



# CEMAR AUTO MANUFACTURING {CAM} FACILITY



- CAM WILL BE SPREADED OVER 155,000 SQ.FT OF AREA PLANT WITH MODERN TECHNOLOGY TO FACILITATE MILITARY CHASSIS AND ARMOURED CABINS PRODUCTION.
- RCWS SYSTEMS DESIGN AND MANUFACTURING FOR FUTURISTIC ARMOURED VEHICLES AND TANKS.
- ALL SPARES AND SERVICE NETWORK TEAM OF 10 ENGINEERS PLACED AT ALL STRATEGIC LOCATIONS.
- MANUFACTURING TEAM OF 200 PERSONNEL WITH ENGINNERING PROFESSIONALS WITH 20 YEARS CHASSIS AND CABINS PRODUCTION
- ALL QUALITY SYETEMS LIKE ISO 9000, QMS AND DOCUMENTED QCP
- WARRANTY AND SERVICE PLANS FOR EVERY PROJECT.



**12 MTR BENDING PRESS**



# CII MACHINERIES

**4 MTR X 1000 TON BENDING PRESS**



**12 MTR X 3.5 MTR WIDE BODOR LASER CUTTING M/c.**



**6MTR X 2.5 MTR WIDE YANGLI LASER CUTTING M/c.**



# CI MACHINERIES



**WHEEL COMBO MACHINE**

**CNC LATHE FOR RUNFLAT**



# CAM FACILITY



## CAM MACHINERY

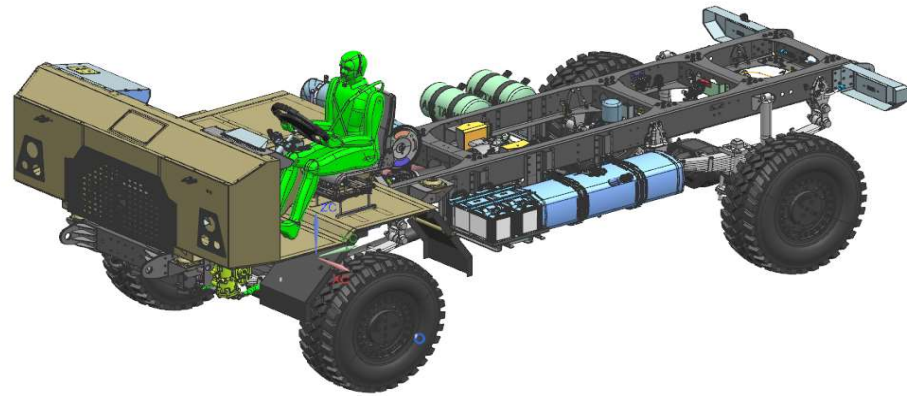
- ROBOTIC WELDING UNIT
- FIBER LASER CUTTING UNIT
- EOT CRANES / JIB CRANE
- GANTRY CRANES
- CNC LATHE MACHINES
- CNC MILLING MACHINES
- AUTO SHOT BLASTING M/c
- SPRAY PAINT BOOTH
- ASSEMBLY LINE
- TESTING & QUALITY LINE
- BRANDING & DISPATCH LINE

**CEMAR AUTO MANUFACTURING IS EQUIPPED WITH HIGH PERFORMANCE MACHINERY & NEW MODERN TECHNOLOGY TO CATER CLIENTS SPECIFIC REQUIRMENTS FOR ARMORING INDUSTRY**





## CAD CAPABILITIES



## SALES AND SERVICE

- CE-MRAP 10 RA
- CE-MRAP 14 RA
- CE-MRAP 14 ISAS
- CEMCHAS 14 RA
- CEMCHAS 20 RA
- CEMCHAS 20 ISAS
- CEMCHAS 30 RA – 6X6
- CEMCHAS 40 RA – 8X8
- CE-MRAP M4 – STANAG III/IV
- MONOCOQUE V HULL DESIGN
- RCWS SYSTEMS
- LIGHT WEIGHT TANKS DEVELOPMENT

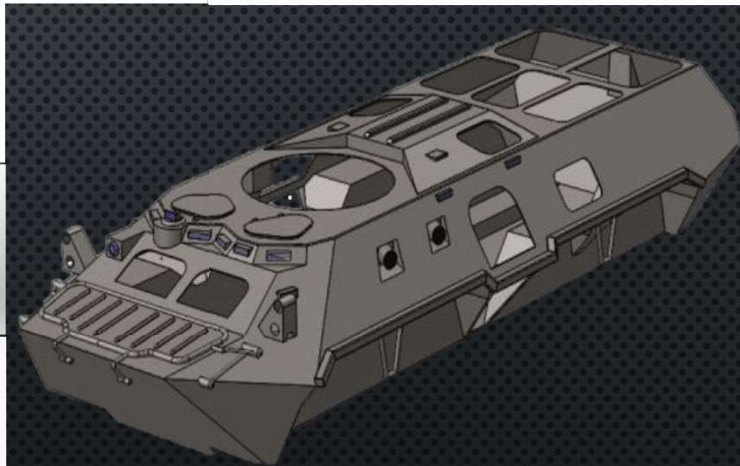


AUTODESK  
AUTOCAD

TRUMPF



TruTops Suite





# CEMAR WEAR RESISTANT & HIGH STRENGTH STEEL

Cemar Can Design Different Capacity of Tipper Body & Chassis from CEMHARD Steel & CEMTUF Steel.



## CEMHARD

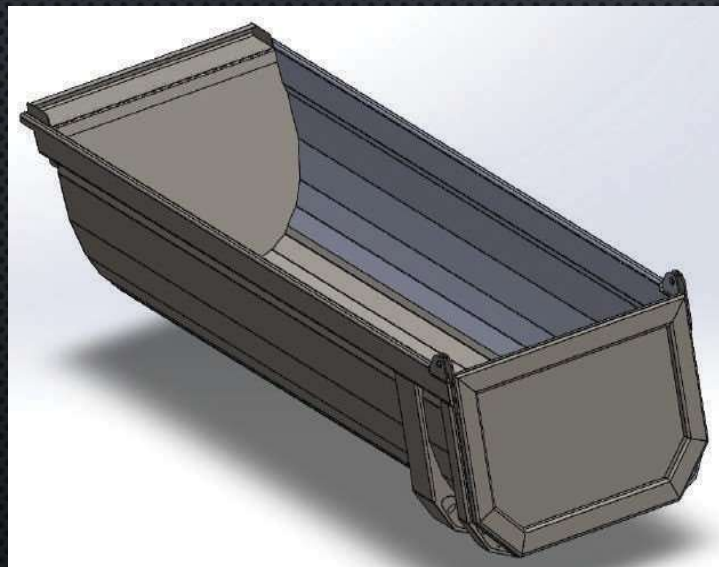


BETTER IN MY BODY

## CEMTUF



BETTER IN MY CHASSIS







## CEMAR GROUP OF COMPANIES

P.O. Box- 454576, PLOT No – TP040107 / TP04011,  
National Industries Park {NIP} / Technopark,  
Dubai, United Arab Emirates.

**Tel:** +971 48839798 / **Fax:** +971 48839795

Web: [www.cemar-international.com](http://www.cemar-international.com) / [www.cemar-autodmcc.com](http://www.cemar-autodmcc.com)

Mob: +971 564844156 / Tel: +971 48839798