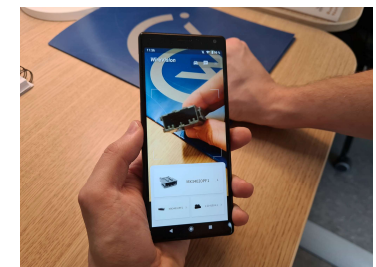
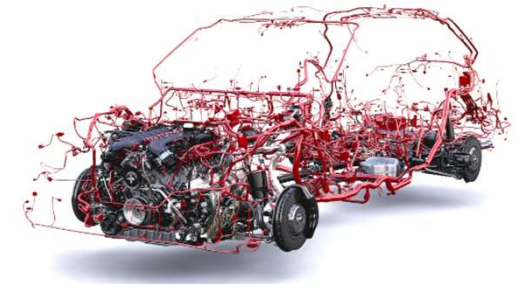


## Virtual assistant for simple and fast components identification

Contact: Charles-Henri GARIH – [charles-henri.garih@novorizon.com](mailto:charles-henri.garih@novorizon.com) – +49 1721 63 50 53 / +33 6 14 70 09 66

- Novorizon GmbH:
  - Grounded in 2018, located in Stuttgart, Germany
  - Part of the Wiretronic AB group since March 2023
  - Over 20 years of expertise in vehicle diagnostics and physical measurement in the Automotive industry (Bosch, Delphi, Facom...)
- We offer a unique product portfolio of innovative solutions for a daily improved efficiency – everything about the vehicle harness!
  - Design, prototyping and small volume production
  - Diagnostics and remote fault localization
  - Test and measurement
  - Servicing and repair
- We also offer AI-based computer-vision solutions to support automotive workshops daily activity
  - Spare parts identification
  - OCR-based applications



## *Parts search and identification issues :*



Workshop technicians  
reported to spend  
approximately

# 10%

of their time on finding  
and ordering the right  
parts



Customer Service  
estimated to spend

# 20%

of their time answering  
questions related to  
parts identification



Logistics estimated to  
spend over

# 5%

of total transportation  
costs on wrongly  
ordered parts



Warranty estimated to  
spend over

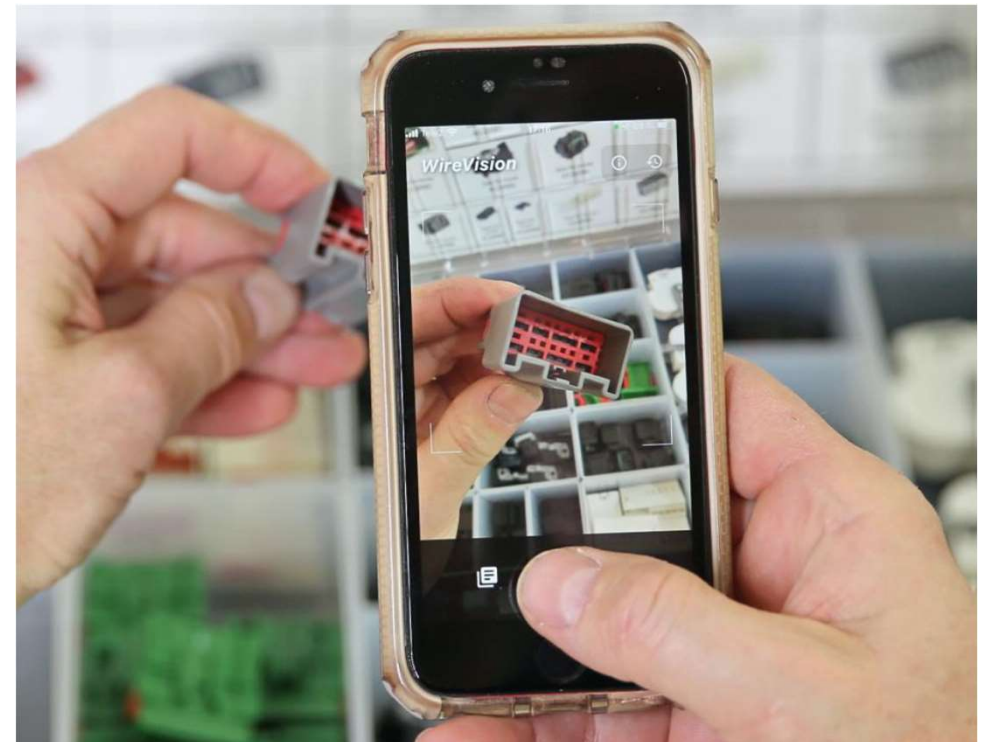
# 5%

of total warranty costs  
due to wrongly ordered  
parts or installation  
issues due to parts

- Enabling important decreased in customer support time and cost
- Need to simplify processes, to reduce errors and to increase loyalty

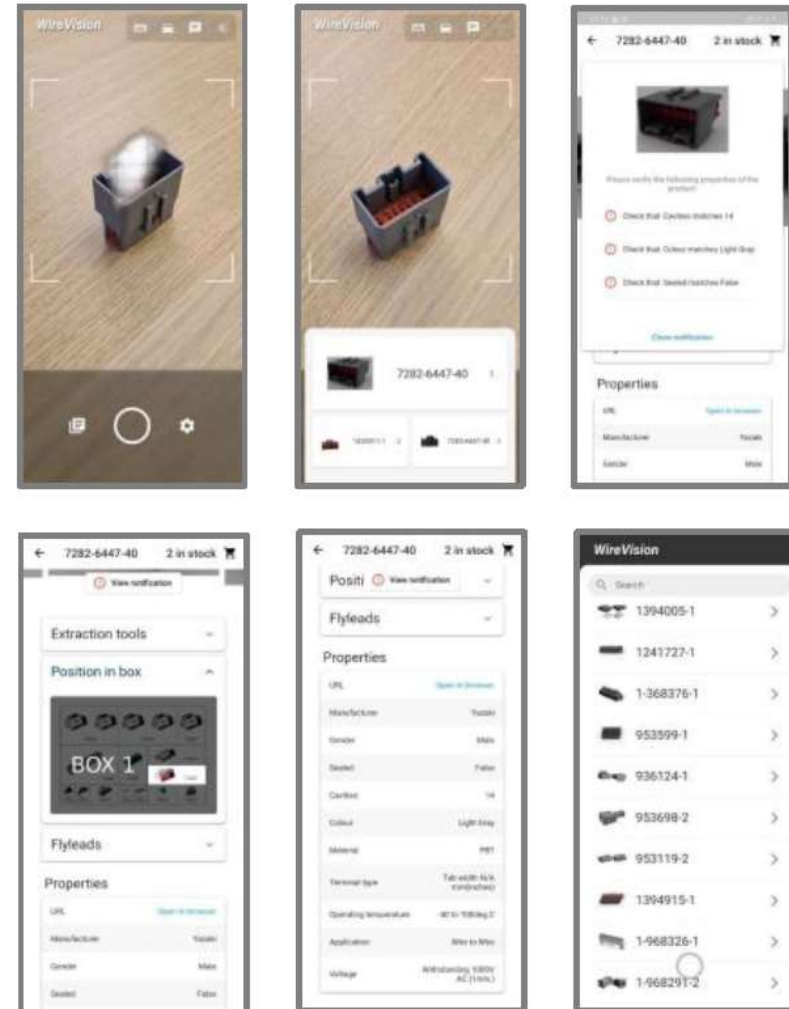
### *Our solution:*

- WireVision – **white label** patented computer-vision assistant based on an Artificial Intelligence engine
- Spare part **identification in a matter of seconds**
- Part details, tooling, required, methodology, warnings ...
- **Smartphone-based** application for a maximal portability in all circumstances
- Flexibility – can be adapted to **any vehicle component & system**



### *Step by step support:*

- Component image acquisition
- Applying machine vision ID process to determine the type and part number of the component
- Display specific repair tools and instructions to perform a professional repair
- Including parts location in spare sets wherever applicable
- **Can be bridged into own ERP** (spare parts ordering, proprietary tech data...)



## *Natural add-on to the WireVision virtual assistant*

- 3-D modelisation of your components, rotational 360°
- Part of our Artificial Intelligence engine training process
- Ideal for on-line parts catalogues, repair manuals and instructions, technical documentation...
- Available to various standards to match your needs
- On-line demonstrator available:  
<https://rotate.wiretronic.ai>



## *Combining computer-vision to Augmented Reality*

- Real-time objects / behaviour / operations monitoring
- Augmented-reality information overlayed to guide the technician step by step and reduce the error risk
- The right tool (in green) can for instance be associated to the right spare part in real-time
- Critical steps can be validated one after the next
- On-line demonstrator available:  
[https://wirevision.blob.core.windows.net/wt-static/app\\_promotion\\_media/wiretronic-ai-media/WireInstruction.mp4](https://wirevision.blob.core.windows.net/wt-static/app_promotion_media/wiretronic-ai-media/WireInstruction.mp4)



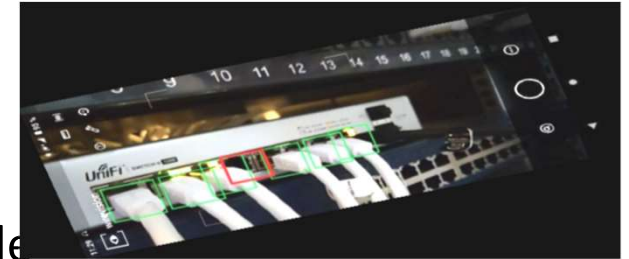
### *OCR-based solutions*

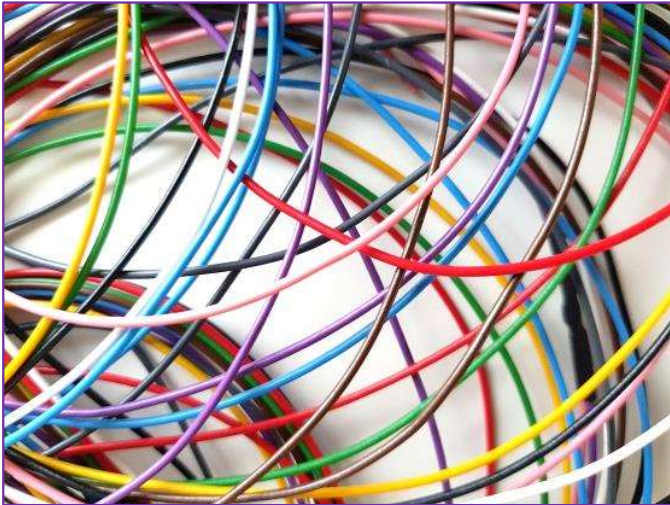
- VIN, registration plates scan in order to speed-up the workshop processes and limit the error risk
- Advanced OCR solutions:
  - Technical plates / registration documents scan
  - Retrieval of all information field
  - Transmission to an online .html page, ready for customer IT system to collect and exploit as required
- Tailor-made solutions to customer requirements
- On-line demonstrator available:  
[https://wirevision.blob.core.windows.net/wt-static/app\\_promotion\\_media/vin-scanner/vin-scan-demo.webm](https://wirevision.blob.core.windows.net/wt-static/app_promotion_media/vin-scanner/vin-scan-demo.webm)



### *Object Detection and Instructions (ODI)*

- Inspection
  - e.g. validate that an inspection has been correctly made and store the results.
- 5-S:
  - e.g. keeping track of tools location in a warehouse and track present and missing parts
- Inventory:
  - e.g. inventorying and spotting missing items among a product composition to facilitate the ordering process
- Diagnostics:
  - e.g. combine fault-codes with computer-vision data model to validate fault physical location





**Thank you for your  
participation and interest**