

# GLOBAL LINK RESCUE

Two solutions for communication during an aerial rescue operation

**AFF** (Aerial Fire Fighting)



**HELITRACKING** (Search and Rescue)



**AD-WAIBE**

INNOVATION & DIGITAL TECHNOLOGIES

# ~ 100 Aircrafts & 100 Rescue Centers equipped in France



## Civilian Security

SAR : 40 helicopters  
Fire Fighting : 23 Aircrafts  
+ 3 drones



## Air Force

SAR : 20 hélicoptères



## Marine + Police

20 helicopters  
Order in progress



## 100 Operations Center

Rescue center  
Crisis center  
Hospitals  
Fire Fighters  
Police  
...

# Military Missions



## French Special Forces

10 Helicopters – Satellite version

# RADIO COMMUNICATION IS ALWAYS AN ISSUE DURING RESCUE OPERATION

## Helicopter

*(Search and Rescue)*

Low altitude, no radar, no radio  
Difficulty to communicate with ground  
No visibility on rescuers

## Aircraft

*(Fire Fighting)*

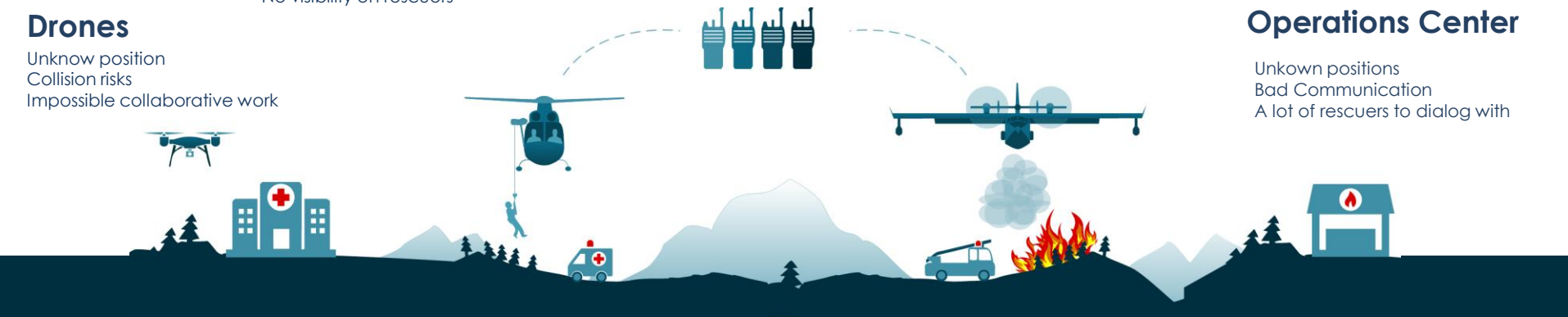
No direct communication with Fire fighters  
No tactical situation  
Short range communication

## Drones

Unknow position  
Collision risks  
Impossible collaborative work

## Operations Center

Unknow positions  
Bad Communication  
A lot of rescuers to dialog with

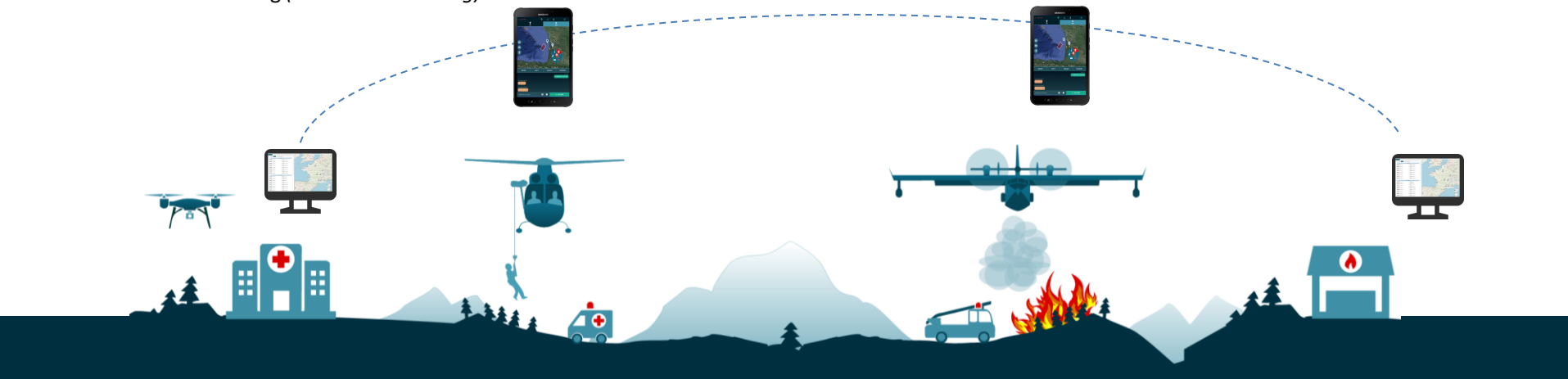


TIME LOST  
OVERCONSUMPTION  
FIRE SPREAD  
VITAL RISK

# Universal messaging tailored for aerial rescue missions, incorporating tactical situational awareness.

- + Chat with free or predefined messages
- + Geographical markers on cartography
- + Image / video transfer
- + Position sharing (*Blue Force Tracking*)

## Direct communication with Rescue Center



### Mission teams

Aircraft  
Helicopters  
Drones  
...



Position Tracker



Tablet App

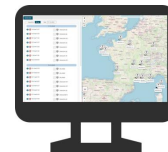
3G/4G/5G

Worldwide



Satellite

### Operations Center



Web App

Rescue center  
Crisis center  
Hospital  
Fire Fighters  
...

# HARDWARE & SOFTWARE

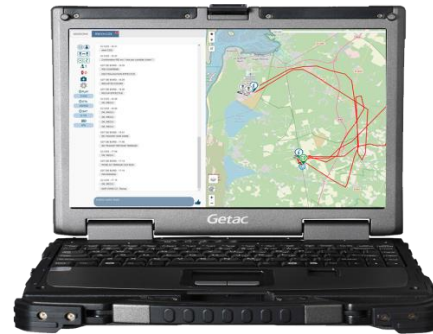
HELICOPTER /  
AIRCRAFT



*iOS / Android app*

3G / 4G / 5G  
↔  
(Internet)

RESCUE CENTER



*Web App*

# Satellite System

- Autonomous / portable
- 20 sec transfer time
- ~1 € per flight hour
- 15 hours Autonomy

*Portable and autonomous satellite modem*



*iPad / Android*

WIFI



Helicopter

*Iridium Satellite*

3G / 4G / 5G



Command Center (C2)

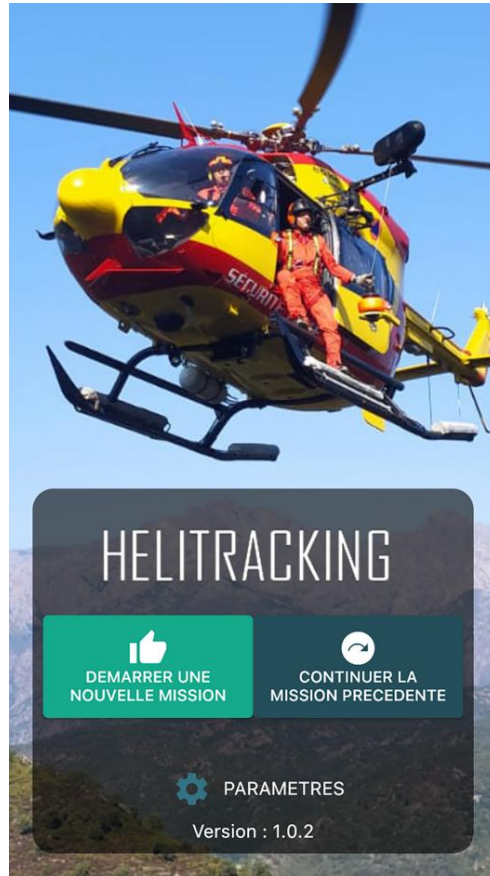
# Position tracking : for drones or ground teams

## Positions sent in the helicopters / aircraft, or to the rescue centers.

- To avoid collision between drones and aircrafts.
- To locate teams lost on ground.

- + GSM & Satellite position tracker
- + Works everywhere !
- + Light (< 100 grams)





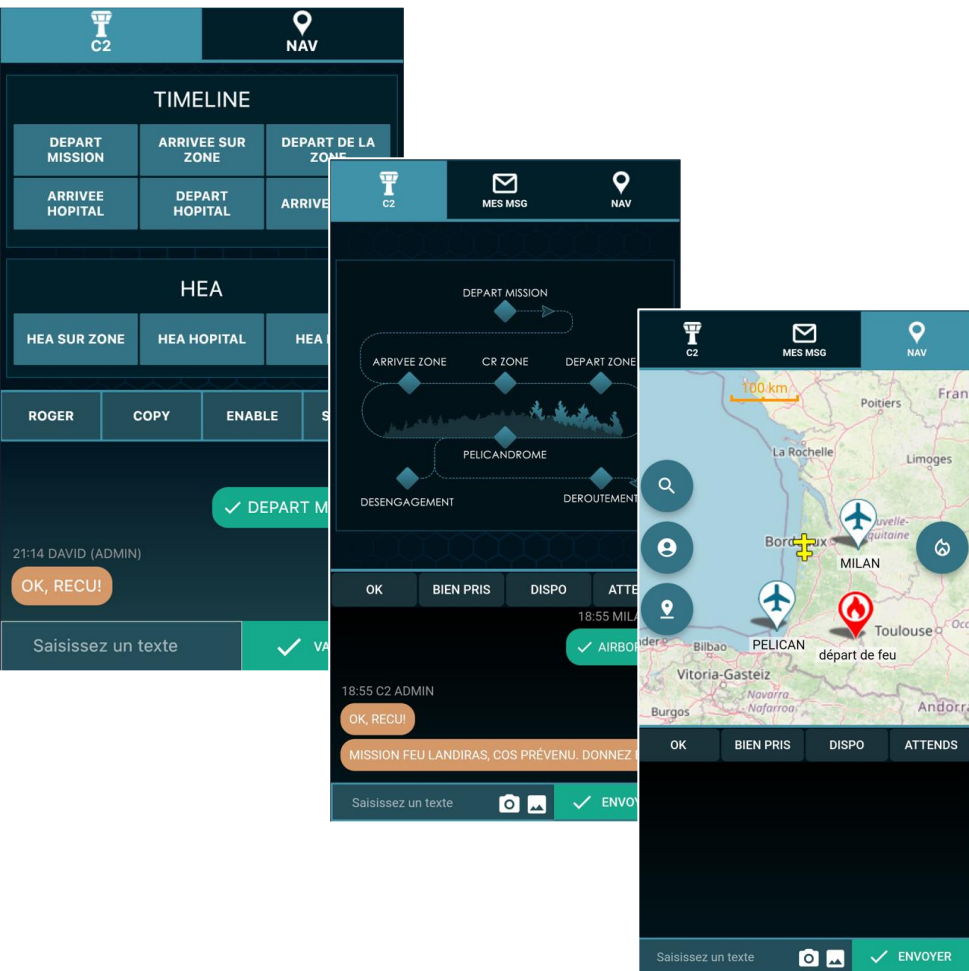
# AIRCRAFT APPLICATION

## TAILOR MADE

Interfaces are :

- Co-designed with the end-users
- Dedicated to THEIR mission





## USER EXPERIENCE

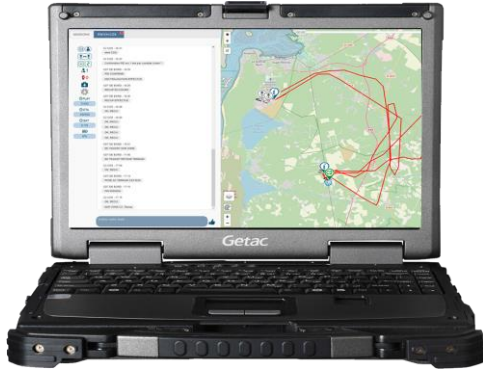
- Simple to use
- Reduced training
- No doubt during mission

## APP FEATURES

- Chat with message acknowledgement
- Predefined text messages
- Free text messages
- Blue Force Tracking
- Offline Maps
- Tactical Situation
- Scalable (automatic updates)
- ...

# C2 APPLICATION

- One chat per aircraft
- Aircraft / helicopter / drone : position & trajectory
- Real time update
- Tactical situation (Map markers, fire, ...)
- ETA / PLAY TIME
- Connection status
- ...

The screenshot shows the C2 application interface. On the left, there's a sidebar with various mission-related icons like 'C2', 'AIRBORN', 'COMMANDOS AU SOL', 'PLAY', 'ETA', 'SAT', and '19%'. The main area displays a mission plan for 'RW-CARACAL' with a list of tasks and their statuses. On the right, a satellite map shows the terrain with red and yellow flight paths, a green 'C2' marker, and other icons. A 'Connexion Web' status bar at the top right shows 'Mike Admin' with a red 'X' icon. At the bottom right, a GPS status bar shows coordinates: N 44° 47' 52.41" W 1° 13' 13.1277" and N 44° 47' 31.45" W 1° 13' 7.68".

MISSIONS TEST DV RW-CARACAL

MAP ZONE C2 : no fly zone

CDT DE BORD - 19:31  
AIRBORN  
DERNIER: RAPPEL 50 PIEDS

Mike Admin - 19:34  
météo sur zone ?

CDT DE BORD - 19:41  
COMMANDOS AU SOL

CDT DE BORD - 19:42  
RAS

Mike Admin - 19:42  
OK, RECU!

CDT DE BORD - 19:46  
DÉBUT 4 CORDES LISSES

Mike Admin - 20:03  
time RTB ?

CDT DE BORD - 20:11  
FIN DE SEANCE

CDT DE BORD - 20:14  
HEURE ESTIMÉE D'ARRIVÉE : 19H30

CDT DE BORD - 20:15  
AIRBORN

CDT DE BORD - 20:17  
MÉTÉO : OVERCAST, SCATTERED1000 PIEDS.POINT DE ROGÉE 3000 PIEDS

Mike Admin - 20:17  
OK, RECU!

Entrez votre texte

GPS 44.79207 -1.2188  
N 44° 47' 52.41" W 1° 13' 13.1277"  
N 44° 47' 31.45" W 1° 13' 7.68"

Free licences for all ground people  
discussing with the mission team

(\* regarding the server capacity)

# A REAL GAIN FOR ALL TYPE OF RESCUE OPERATION

## CHANCE OF SUCCESS INCREASED

- Less time for the mission
- No communication problem, clear messages
- Reduce workload

## SAFER FLIGHTS

- Team member and drones geolocation
- In case of crash, wreck geolocation
- Reduces stress an doubt

## PLUG AND PLAY WITHOUT AIRCRAFT MODIFICATION

- Reduced technical constraints, no integration cost
- Used on YOUR tablets.

## MISSION MEMORIZED

- Legal defensibility
- Automatic debrief

## SAVE MONEY

- Reduced flight time
- Lower fuel consumption
- Reduced maintenance costs.





# AD-WAIBE

INNOVATION & DIGITAL TECHNOLOGIES



David ARNEAU - CEO



+33 6.10.09.66.14



[CONTACT@WAIBE.FR](mailto:CONTACT@WAIBE.FR)



[WWW.AD-WAIBE.FR](http://WWW.AD-WAIBE.FR)



11 bis rue des Grépins  
33740 ARES - FRANCE